

DIS PLACE MENT

Uncertain Journeys

displacementjourneys.org

2018-2020





Flood-affected Bangladesh after Cyclone Aila, 2009.
© IOM Bangladesh

DISPLACEMENT

Uncertain Journeys

DISPLACEMENT will amplify and contribute to the work of the Platform on Disaster Displacement through a cultural programme that gathers and cultivates creative and artistic responses to the millions of people displaced each year around the world by the impacts of disasters and climate change.

The Platform on Disaster Displacement

Disaster displacement is one of the biggest humanitarian challenges of the 21st century. Every year, millions of people are forced to leave their homes because of floods, tropical storms, droughts, glacier melting, earthquakes and other natural hazards. Many find refuge within their own country, but some have to move abroad. Scientists warn that climate change is projected to increase displacement in the future, both internally and across borders.

The Platform on Disaster Displacement is a state-led process that aims to implement the recommendations of the Nansen Initiative Protection Agenda, endorsed by 109 government delegations in 2015 to address the challenges posed by disaster displacement. The Protection Agenda highlights key action areas to improve the international response to cross-border disaster-displacement through a wide variety of activities and technical areas.

Project Outline

DISPLACEMENT is devised as an integrated cultural component of the Platform on Disaster Displacement (PDD), using art practice and research as a methodology to add value to PDD's work with global, regional and national policymakers. It seeks to provide a dynamic public interface that heightens awareness about the key issues and challenges related to disaster displacement.

DISPLACEMENT will be an artistic catalyst for PDD. It promotes an expanded discussion about disasters, climate change and displacement through a diverse programme of activities that includes: exhibitions and installations, commissioned artwork, cultural dialogues, public events, an online art gallery linked to social media, and publications.

DISPLACEMENT intends to map and connect a global range of cultural activities addressing disaster-displacement themes to amplify and raise the visibility of artistic work already taking place in local contexts. It will feature contributions from a diverse set of artists, many who come from disaster displacement-affected regions, with an emphasis placed on PDD's priority geographical regions: Central America, East Africa, South America, South Asia, South East Asia, the Pacific, and West Africa.

DISPLACEMENT builds upon the cultural programme presented as part of the 2015 Nansen Initiative Global Consultation, which included an art exhibition for government delegates and the public, multiple artistic interventions at the Global Consultation venue, and a roundtable discussion on the relationship between art and policymaking. It also represents a key part of the University of the Arts London's knowledge and research contributions to PDD as a member of the Advisory Committee.



Nansen Initiative Global Consultation delegates experiencing Lucy + Jorge Orta's *Antarctica World Passport Bureau*.



Above: Lucy + Jorge Orta, *Antarctic Village - No Borders* and *Antarctica World Passport Bureau*, exhibited as part of *DISPLACEMENT: Uncertain Journeys* and the 2015 Nansen Initiative Global Consultation in Geneva, Switzerland.

Left: *Island Tables* - An installation of round tables at the Global Consultation venue showcases the work of artists engaged in the themes of displacement, climate change and disasters.

PROPOSED ACTIVITIES 2018-2020

DISPLACEMENT's proposed programme of activities reflects PDD's own wide variety of activities, which are undertaken in collaboration with a diverse set of actors representing multiple geographic regions. **DISPLACEMENT's** activities also underscore the critical importance of working with local artists whenever possible to highlight their existing work and to prompt further awareness and understanding about disaster displacement in affected regions.

DISPLACEMENT's activities are carefully designed to engage government representatives and other participants during regularly scheduled conferences and workshops addressing disaster displacement. In parallel, additional activities engage local and regional artists, cultural commentators and art institutions to take the official conversations on disaster displacement out into the wider world.

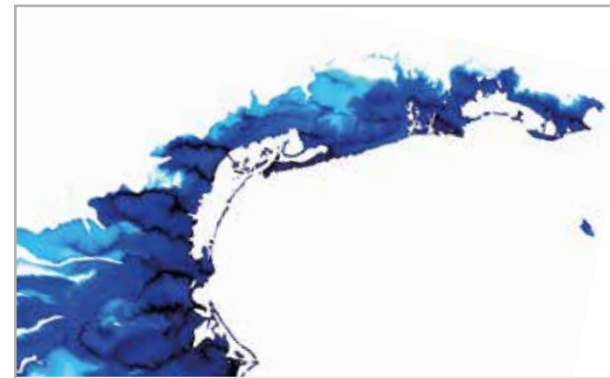
INSTALLATIONS AND ARTISTIC INTERVENTIONS

Conference venues are challenging spaces for artistic installations. Conference delegates also need to retain their focus on the official programme and benefiting from networking opportunities. **DISPLACEMENT's** activities during formal conferences or meetings are consequently planned as informal contributions to complement PDD's work, using a process of engagement that takes advantage of periods between the formal programme and the physical spaces outside official meeting rooms.

At large international, intergovernmental conferences, such as when PDD hosts a side-event, **DISPLACEMENT** proposes developing a visual and sound looping slideshow of artistic works that could be viewed as participants wait for the session to begin. A portable "pop-up" display of artwork could also be developed. Other possible artistic interventions include projections in the hallways between meeting rooms, and temporary floor tiles with images that could be walked on by participants. Depending on the venue, images could also be projected on the outside of conference buildings. Brochures, available in print or online as PDFs, would be available to accompany the artistic interventions.

For PDD-organized regional meetings, training events or other conferences, **DISPLACEMENT** proposes stand-alone exhibitions featuring local artists from the region, complemented by explanatory brochures included in the participants' meeting materials. Images of commissioned artwork addressing disaster displacement-related themes could also be printed and displayed on participants' luncheon tables. Additional region-specific interventions at PDD events could be developed based on collaboration with local artists and cultural institutions.

All the displays and materials mentioned above could also be made available to PDD partners for use at similar events they host where PDD is not present.



Top: Marie Velardi *Atlas of Lost Islands* (detail)

Bottom: Walter Kaelin (Envoy of the Chair of PDD)(left) with Lucy Orta (artist) and Chris Wainwright (curator/artist), discussing Orta's artwork *Antarctic Village - No Borders*.



Top: UK artist Robin Jenkins (left), Nansen Initiative Research and Policy Officer Hannah Entwisle Chapuisat (center) and Bangladeshi artist Din Muhammad Shibly (right) discuss how their work addresses disaster displacement and climate change in a public round table discussion.

Above: Din Muhammad Shibly. From TIME/LIFE.

Left: Curator and artist Chris Wainwright addressing the Nansen Initiative Global Consultation in Geneva, 2015.

PROPOSED ACTIVITIES 2018-2020

CULTURAL EVENTS

Many artists, critical commentators, cultural organizations and art educational institutions share a common concern about human mobility, disasters and climate change, but may not be aware of or linked to intergovernmental efforts to address these challenges.

DISPLACEMENT proposes a series of events and workshops with local and invited artists, students, academics and organisations alongside official PDD events in different regions of the world. Cultural dialogues will be planned in partnership with regional cultural or academic institutions to identify relevant local and regional artists. The dialogues will seek to i) stimulate discussion amongst cultural actors about disaster displacement, ii) encourage the production of new artwork, and iii) leave behind a legacy of enhanced engagement and collaboration between cultural actors. The cultural dialogues will also explore opportunities for discussion and exchange between artists and policymakers.

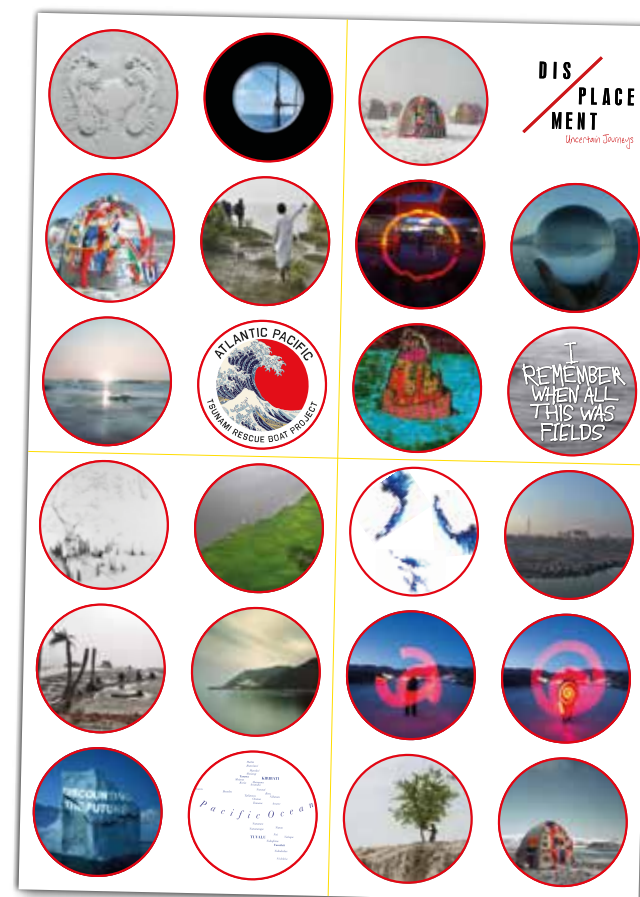
In 2019, **DISPLACEMENT** proposes a global meeting to bring together a select group of regionally representative artists who are particularly committed to addressing disaster-displacement issues in their work. The global meeting will aim to: i) consolidate regional examples of artistic practice and research on disaster displacement and climate change-related themes, ii) create a cultural network on disaster displacement for future collaboration, and iii) contribute to PDD's efforts to address knowledge and data gaps. Members of the PDD Advisory Committee from other technical areas will also be invited to develop collaborative research projects with members of the cultural network on disaster displacement.

ONLINE GALLERY, EXHIBITION AND PUBLICATION

DISPLACEMENT will include an online platform to make the project accessible to the public at large. In addition to displaying selected artwork addressing disaster displacement, the website will feature a gallery to which artists can upload their own artwork (video, stills and sound). It will also include background information about disaster displacement and PDD, and use social media to promote **DISPLACEMENT**-related projects, upcoming events and calls for contributions.

In 2020, **DISPLACEMENT** proposes a large-scale, touring exhibition to bring greater visibility to the work of selected artists that address disaster-displacement and climate change-related themes. The exhibition will profile both existing and newly-commissioned work to ensure regional diversity and representation.

A series of short, region-specific publications will accompany the exhibition, and include high quality visual representations of artistic works, supported by commissioned commentary and essays from art critics and technical experts on disaster displacement and climate change. The publications will be bilingual depending on the regions they represent, in English, French and Spanish.



DISPLACEMENT pamphlet developed for Nansen Initiative Global Consultation participants, which included explanatory text about the artwork presented during the Consultation.



Chris Wainwright, *We Are All Stars 02 (Minna ga sutah)* 2015.
A group semaphore performance in Iwate Prefecture, Japan,
which was devastated by an earthquake and tsunami in 2011.

PROJECT MANAGEMENT

CURATORIAL AND DELIVERY TEAM

The Curatorial and Delivery Team for **DISPLACEMENT** includes a core curatorial group responsible for the overall design and implementation of the project, and technical advisers who provide expert guidance on disaster displacement-related policy and processes:

Hannah Entwisle Chapuisat, **DISPLACEMENT** Curator, and PhD candidate at University of the Arts London

Gorm Ashurst, Graphic Designer and Curator, Bullet Creative design agency

Kate Sedwell, Creative Advisor, Creative KEN

Prof Walter Kaelin, Technical Adviser, Envoy of the Chair of the Platform on Disaster Displacement

Chirine El Labbane, Technical Adviser, Communication Officer for the Platform on Disaster Displacement

Nina M Birkeland, Technical Adviser, Senior Adviser on Disasters and Climate Change for the Norwegian Refugee Council

Additional advisers, specialists and supporters may be added to the team for specific aspects of the project, including local knowledge and expertise.

This collaborative project continues in memory of Professor Chris Wainwright's (1955-2017) leadership and vision as lead curator and contributing artist in the creation and development of **DISPLACEMENT**.

CONTACT

Hannah Entwisle Chapuisat

DISPLACEMENT Curator

Email: hannah@lafruitiere.ch

Tel: +41 78 658 3694

Chirine El Labbane

Communication Officer

Platform on Disaster Displacement

Email: chirinee@unops.org

Tel: +41 22 917 8942 | +41 79 542 18 09



Top: Robin Jenkins, *Tsunami Rescue Boat* 2015

Below: Bruce Burson (independent legal expert), Marie Velardi (artist), José Riera (senior adviser, UNHCR), Chris Wainwright (curator/artist) and Walter Kaelin (Envoy of the Chair of PDD) discuss the relationship between art and international policymaking during a public round table discussion in 2015.



DIS
PLACEMENT

displacementjourneys.org



PLATFORM
ON DISASTER
DISPLACEMENT
FOLLOW-UP TO THE NANSSEN INITIATIVE



NORWEGIAN
REFUGEE COUNCIL

ual: university
of the arts
london

Front cover: Lucy + Jorge Orta, *Antarctic Village-No Borders* and *Antarctica World Passport Bureau*, exhibited as part of *DISPLACEMENT: Uncertain Journeys* and the 2015 Nansen Initiative Global Consultation in Geneva, Switzerland.

Back cover: Din Muhammad Shibly, Bangladesh, Image from TIME/LIFE